

# Seminar Booklet

TETRA Introduction



will'tek



# TETRA Introduction

## Contents

Overview	3
The Market	4
PMR and PAMR	4
Why a new standard?	6
TETRA applications	7
TETRA roll-out plans	8
The TETRA/Tetrapol race	9
The Technology behind TETRA	10
TETRA substandards: V+D, PDO, DMO	10
Simplex, semi-duplex, full duplex	11
TDMA	12
Burst and time slots	14
Channel structure	15
Higher data rates: multislot operation	16
Modulation and channel coding	17
Basic specifications	18
Glossary	19



## Overview

To put it very briefly, TETRA is a wireless communication standard for Professional Mobile Radio (PMR) and Private Access Mobile Radio (PAMR) applications. It is a digital format, i.e. speech is transmitted as binary data, which makes it far more difficult to monitor or eavesdrop.

The acronym **TETRA** stands for **TErrestrial Trunked RA**dio.

Initially it stood for Trans-European Trunked RAdio, but the creators of TETRA within the European Telecommunications Standards Institute (ETSI) decided to give it a far more global scope.

Apart from ETSI, where TETRA is defined, there is another organization to promote the TETRA standard, the TETRA MoU – a nonprofit organization with its secretary based at TeleDanmark.



Further details of the MoU can be obtained from:

TETRA MoU Association

Tel. +44 (0) 1480 370640

Fax +44 (0) 1480 370641

[www.tetramou.com](http://www.tetramou.com)

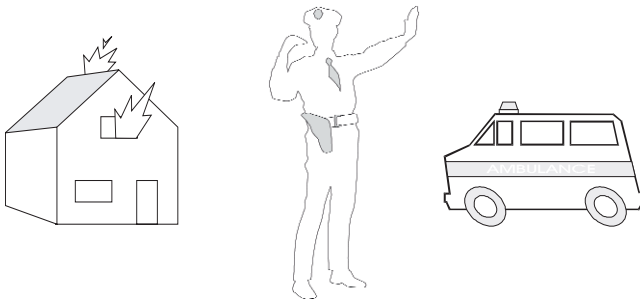
This seminar booklet gives an overview of TETRA, both from the applications point of view as well as from the technology side.

# The Market

## PMR

Professional Mobile Radio (PMR) user groups own their network of terminals and base stations. The PMR system may be restricted to a specific area e.g. factory area or town. Users have their own channels – another PMR system uses a different set of frequency channels.

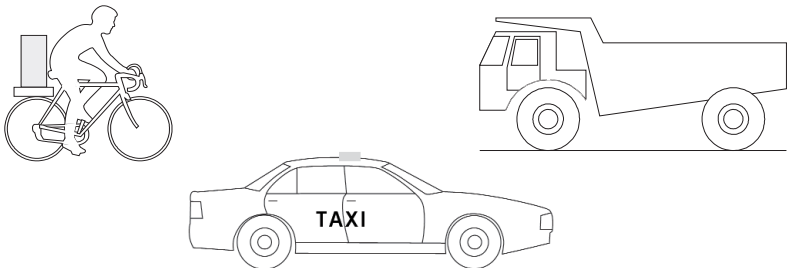
**User applications:** emergency services (fire brigade, police, ambulance).



## PAMR

A Private Access Mobile Radio (PAMR) network operator offers trunked system services to many different organizations. The operator administers a "trunk" of channels which are made available individually for the period of a call (individual or group call). This way, the frequency resources are shared much more efficiently. Some PAMR users are maintenance fleets and courier services. These PMR user groups mentioned above could share their networks and thus become PAMR users.

**User applications:** delivery services, construction companies, taxi companies.



Although PMR and PAMR may be very different from the perspective of channel ownership, the underlying protocol and RF interfaces can be the same. Also, user groups communicate with each other over the air interface: it is a radio to radio communication, possibly connected by a relay base station. There can be a conversation between two distinct users or there may be a group call, i.e. one person broadcasts to many. In order to talk, the terminal user pushes a button to reach a whole group, or typically enters a 3-digit number to access another user.

This is different than cellular phone usage, where communication is always between two users, one of whom is often connected to the fixed line telephone network. People are used to dialing, for example, a 10-digit number and then waiting a couple of seconds before the call is routed through and the person at the other end has answered the call.

Typical features of PMR/PAMR systems include:

- Individual & group calls
- Fast call setup
- Semi and/or full duplex
- May support calls into the PSTN.

## Why a new standard?

Users of current analog systems require new features, such as those listed below:

Features lacking in the past	Fulfillment through TETRA standard
Voice encryption (most current FM or PM-modulated systems can be tapped)	Digital speech transmission Additional encryption supported
Data transmission at higher rates (e.g. MPT 1327 allows only 1.2 kbits/s)	7.2 kbit/s with multislot operation (unprotected)
Late entry to group calls	✓
Possibility to operate without a base station	Direct Mode Operation DMO
Higher spectrum efficiency	4 channels per 25 kHz (TDMA)
Short data service	SDS
Other supplementary services	More than 20 supplementary services defined, such as Ambience Listening, Call Barring, Call Hold, Call Diversion

Many manufacturers, operators and user groups participated in the creation of the new standard, so it is anticipated that it reflects today's and tomorrow's needs. Phase 1, the basic standard, was completed in 1996. Since then, trial systems have been set up, followed by full network installations.

The TETRA standard is a living standard. While systems are deployed to the current standard, a new range of applications can be opened up simply by adding features to the specifications.



## TETRA Applications

Most of the applications described below require short communication connection times. Companies want to be able to budget the costs of their radio communication, rather than having a little surprise every time they receive a new monthly mobile phone bill. Therefore trunked network operators offer flat connection rates depending on the required services.

Utility services not only have networks of electricity lines, gas pipelines and water pipes, but also their own set of frequencies. Radio communication is of vital importance to keep the services going and to achieve quick repair. Up until now, most calls were voice only, but it is not difficult to imagine how drawings and digital maps could vastly improve the performance of a service fleet with mobile data capability.

A whole range of new applications become feasible with PMR in public transport. In the first step, all drivers use their radio to be able to contact their base. The next step is to enable vehicles to report their respective positions, so that their location is known. This can then be used to calculate delays in scheduled departure times. If delays accumulate too much, additional vehicles can be requested and allocated automatically (by a central computer). "Next bus/train" information can be provided at bus stops, train platforms, and even on TV (TeleText) or on the Internet, so that the passenger starts his or her walk through the rain only when it is time to catch the next bus or train. And subway trains can have "Help" phones and video cameras to enhance security.

Many companies employ service fleets to install and repair equipment, which can range from washing machines to photocopiers. Technicians need to be accessed very quickly, especially in the case of maintenance contracts with fast response time. This can only be achieved if the technician is equipped with a radio terminal, preferably with data transfer and print capabilities, so that necessary information for the next visit (location, specifics of the defect device) can be made available. The technician could then send a report back which is used for archive purposes, as well as to bill the customer.

Police, ambulance and fire brigade need radio communications every day, not only in highly populated areas but also in the countryside. The beauty of a system like TETRA is that they can share services provided by a single network, and where network coverage is not achieved (e.g. during disaster relief in tunnels), direct mode terminals can communicate with each other without requiring a network.

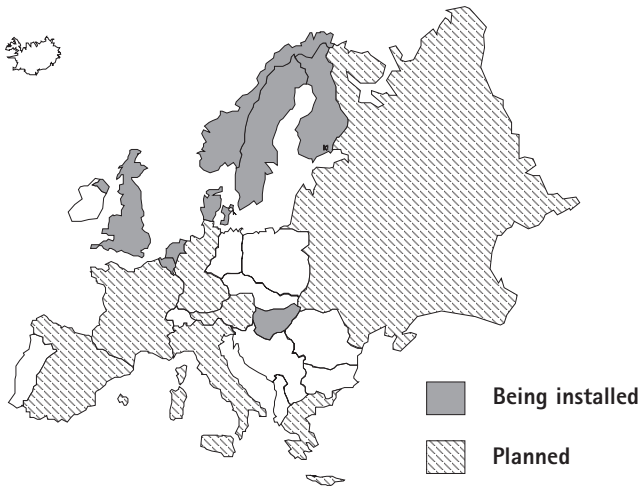
Other applications can be found, for example in courier services, for construction sites, building security, taxis and even in the military.

# TETRA roll-out plans

The first TETRA systems to be installed include utility provider Helsinkin Energia, the new airport in Oslo, and many European police and public safety organizations such as in Finland, The Netherlands, Belgium and the Basque country.

PAMR operators are investing in the new digital technology to make trunked systems more attractive with new features, services and wider range.

TETRA applications are not restricted to Europe – trial systems can be found on other continents as well, e.g. in Australia and New Zealand. Some countries are considering TETRA systems for their applications; examples are the Hong Kong police and the Indian railway system.



## The TETRA/Tetrapol race

TETRA manufacturers are competing with another system – Tetrapol, developed by the French company EADS Telecom. While both systems provide the same basic services, the technology behind the services is quite different (Tetrapol is an FDMA system with a gross data rate of 8 kbit/s, with recommended channel spacing of 12.5 kHz). Both systems have their specific advantages.

TETRA	Tetrapol
Better spectral efficiency (four channels in 25 kHz)	Fits very well in existing 12.5 kHz channel spacing scheme
	Permissible range between network and radio terminal may be higher, reducing BS costs
Scalable data rates, up to 28.8 kbit/s	
Approved ETSI standard	Many existing deployments prove that the Tetrapol standard is a feasible solution
Multi-vendor system	

When selecting a standard, new operators are first tempted to compare initial deployment cost, but soon realize that the total cost of ownership needs to be taken into account. This requires a detailed study of the business case based upon user needs.

# The Technology behind TETRA

## TETRA sub-standards: V+D, PDO, DMO

TETRA comes in three different modes: Voice + Data (V+D), Direct Mode (DMO), and Packet Data Optimized (PDO).

**V+D** is the standard most commonly referenced. It allows switching between speech and data transmission instantaneously; both can even be transmitted "at the same time" (in different time slots on the same channel). The radio protocol has been optimized to allow fast call setup, different duplex methods and high spectrum efficiency in a trunked mode environment, i.e. using base stations to relay information.

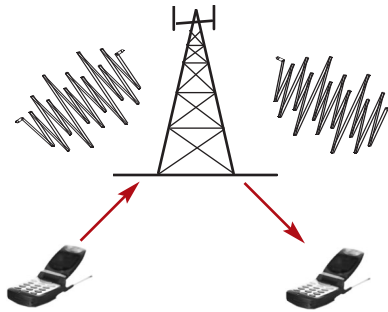
The **Direct Mode** supports voice and data transmission as well, but without a base station between radio terminals. The current or last terminal transmitting user data (e.g. voice) acts as a kind of base station. Full duplex radio is not supported in the DMO standard.

For applications requiring occasional data transmissions, the **PDO** standard has been created. This can be a highly efficient method for data-only transmissions to save costs. There are much higher data rate requirements foreseen in the future and to cater for these new demands, an ETSI project group (DAWS) has been set up to define a faster system built on the TETRA PDO core.

## Simplex, semi-duplex

In trunked mode operation, there is always a base station and network to switch information between one or several users. Any type of communication can be:

- full duplex (both can speak and listen at the same time).
- semi-duplex, where only one party can speak at a time, usually a Press-To-Talk button is used and the end of speech is announced by "Over".
- simplex, which can be a broadcast message.



**Simplex or semi-duplex**

There is also a direct mode being used when there is no base station available. In this case, only one party can speak at a time (semi-duplex or simplex).



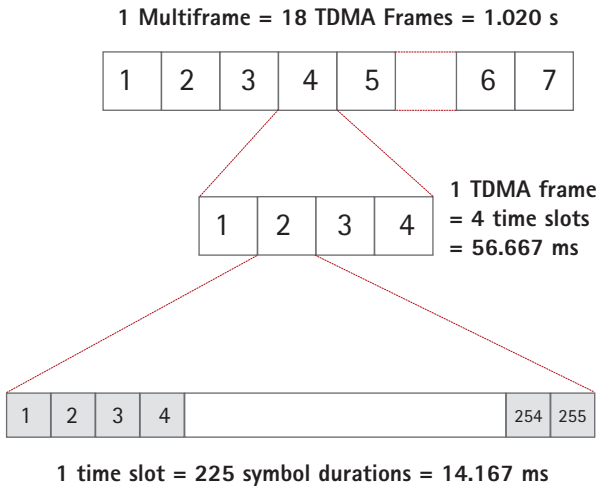
**Direct Mode**

# TDMA

TETRA is a TDMA standard. This means several users share one frequency, speech and data are transmitted in digital format and multiplexed into time slots. All of the four different TETRA time slots on one carrier bear different channels, so there can be as many as four different calls on one 25 kHz wide carrier frequency.

There are (at least) two advantages to this method:

- Several time slots can be used to transmit voice and data at the same time, or time slots (channels) can be combined to transfer data at higher rates.
- The four channels are transmitted and received by the same equipment in the base station, which can reduce the infrastructure cost.

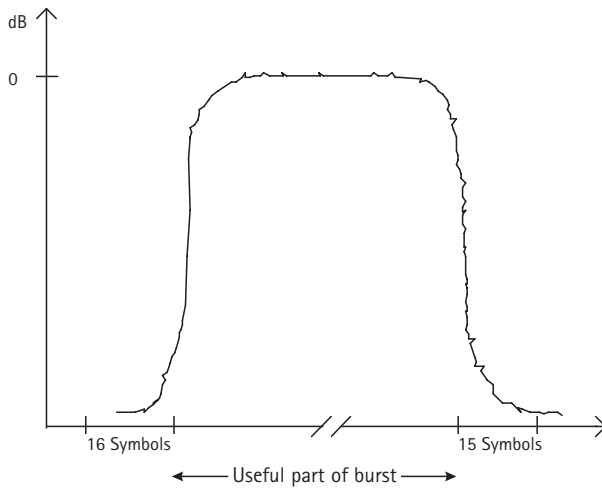


One time frame consists of four timeslots. Data is compressed and sent in one of the available time slots.

On a traffic channel, every 18th frame is used to exchange additional control information between the radio terminal and the base station.

<b>one multiframe</b>	<b>= 18 frames</b>	<b>= 1.02 s</b>
<b>one frame</b>	<b>= 4 time slots</b>	<b>= 56.667 ms</b>
<b>one time slot</b>	<b>= 255 symbols</b>	<b>=14.167 ms</b>

Several radio terminals may use the same carrier. So that they do not interfere with each other's communication, each terminal is assigned its own time slot for the duration of the call. The terminal sends its data in a burst, i.e. the radio power is turned on for a short period and turned off again before another terminal transmits in the next time slot.



## Bursts and time slots

A radio terminal transmits its data in so-called "bursts". The transmitter emits RF power for a defined period of time (usually a time slot). The RF carrier is modulated with the bits that make up the call or control information. During a call, one burst is transmitted per TDMA frame.

Although a base station usually sends a continuous bit stream, this stream of data is also divided into time slots, and these time slots are often called bursts (although the power remains on).

A burst can carry one or several logical channels, e.g. in the downlink (from base station to terminals). Most bursts consist of a long bit sequence for one channel and a shorter bit sequence to broadcast how and when this physical channel is used (see AACH on page 15).

Each time slot consists of a number of bits, grouped into bit fields with their respective meaning. The TETRA base station uses the following types of bursts:

- Normal (continuous or discontinuous) Downlink Burst NDB, used for most transmissions from the base station to the terminal.
- Synchronization (continuous or discontinuous) downlink Burst SB, carrying a longer training sequence, used to support the terminal when it synchronizes to the base station.

The TETRA terminal uses a different set of bursts:

- Control uplink Burst CB, a half-slot burst used by the terminal for initial network access.
- Linearization uplink Burst LB, a burst sent only to allow the terminal to adjust its own transmitter.
- Normal uplink Burst NUB, the burst type used in any other transmissions.



## Channel structure

In TETRA, there are physical channels and logical channels. A physical channel is determined by its frequency and time slot number. Each physical channel may carry several different logical channels. One example is that every 18th frame is a control frame carrying a control channel, no matter which type of channel is allocated in the other frames.

Also, a traffic channel (TCH) carrying user data, may be interrupted by a Stealing Channel (i.e. stealing a traffic channel) for the purpose of transmitting control information.

The following control channels can be found in TETRA V+D:

- Broadcast Control Channel (BCCH), consisting of the two sub-channels: Broadcast Synchronization Channel BSCH and the Broadcast Network Channel BNCH. Both are transmitted by the base station to allow the terminal to identify the network. The base station also defines basic access parameters.
- Linearization Channel (LCH), allowing the base station or the terminal to align its transmitter.
- Signaling Channel (SCH), used to exchange control information between the base station and the terminal e.g. when the terminal registers with the base station (location update) or when the call is set up.
- Access Assign Channel (AACH), a channel transmitted by the base station in the middle of every normal burst to announce how the current physical channel is used and when it can be accessed by terminals.
- The Stealing Channel (STCH) is associated to a TCH – during an ongoing call, TCH transmissions can be replaced by a STCH when important protocol information shall be exchanged, e.g. for a handover to a different cell or frequency.

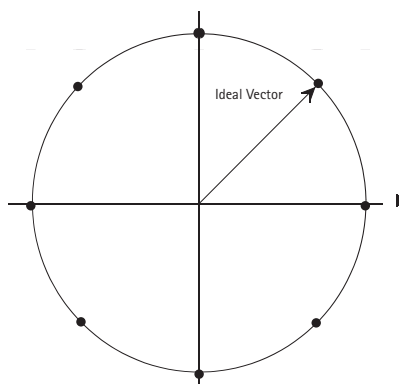
## Higher data rates: multislot operation

The maximum user data throughput on a channel is 7.2 kbit/s. This may not be sufficient for future applications, e.g. for slow video transmission. A method to enhance the data rate is channel bundling. A data transmission spans two or more consecutive time slots, thereby reaching a maximum user data rate of 28.8 kbit/s.

This is not fast compared with today's fixed line modems, but in the field of radio communications, it is a major improvement over today's technology. It is about 20 times faster than with MPT1327 and three times faster than the basic GSM standard.

## Modulation and channel coding

The modulation format of TETRA is  $\pi/4$  DQPSK (differential quaternary phase-shift keying). This modulation method shifts the phase of the RF carrier in steps of  $\pm\pi/4$  or  $\pm3\pi/4$  depending on the data transmitted. With each phase change, one symbol containing two bits is transmitted. In a vector diagram of the modulation signal, the ideal positions of the eight possible signal vector states lie on a circle.



**Representation of the modulation in the constellation (I/Q) display**

TETRA uses error-tolerant modulation and coding formats. The information to be transmitted is coded, adding some redundant information in the CRC. This information can be used to identify reception errors and to reconstruct the correct bit stream with a highly sophisticated bit error correction algorithm. But if the correction function is operating at its limits (e.g. because transmitter and receiver are far from each other so that the signal quality is very low with many errors), speech quality could suddenly turn from good to bad. Therefore, correctly adjusted demodulators and modulators are necessary.

## Basic specifications

Frequency range:	Not fixed, preferred bands for European applications: 380 to 400 MHz for public safety systems 410 to 430 MHz for commercial applications
Duplex:	Frequency Division Duplex FDD
Duplex spacing:	10 MHz (downlink in the lower band usually)
Carrier spacing:	25 kHz
Channel multiplex:	TDMA: four time slots per frame (18 frames per multiframe)
Time slot length:	14.167 ms (frame length: 56.667 ms, multiframe length: 1.02 s)
RF transmit power:	MS: 15 to 45 dBm (0.03 to 30 W) in 5 dB steps (maximum power depending on mobile class) BS: 28 to 46 dBm (0.6 to 40 W), depending on BS power class
Gross bit rate:	36 kbit/s
Modulation:	$\pi/4$ -DQPSK, roll-off factor $\alpha = 0.35$
Speech coding:	A-CELP (Algebraic Code-Excited Linear Predictive) Codec, 4.8 kbit/s
Data rate:	Up to 7.2 kbit/s per channel, 28.8 kbit/s with multiple slots

## Glossary

BS	Base Station
CRC	Cyclic Redundancy Check
DMO	Direct Mode Operation: Mobile stations communicate directly with each other, without the need of a base station. More difficult to control (e.g. by a dispatcher), but the only way to communicate in areas where there is no base station available (e.g. in a tunnel).
ETSI	European Telecommunications Standards Institute
MCC	Mobile Country Code, standardized in an ITU specification
MNC	Mobile Network Code, to differentiate different networks in a country.
MPT1327	"MPT 1327 – A Signaling Standard For Trunked Private Land Mobile Radio Systems": First open trunking standard, prepared by the British Department of Trade and Industry.
MS	Mobile Station: May be mobile phone, data terminal equipment, fax etc.; vehicle-mounted or hand-portable.
PAMR	Private Access Mobile Radio
PDO	Packet Data Optimized: TETRA defines not only systems for direct voice and data communications, but also for packet data transmission.
PMR	Professional Mobile Radio
PSTN	Public Switched Telephone Network
PTT	Press To Talk: The button you press on simplex/semi-duplex mobile stations in order to transmit.
$\pi/4$ -DQPSK	$\pi/4$ Differential Quaternary Phase Shift Keying: A modulation format coding two bits of information into one symbol, hence the symbol rate is half the bit rate.

SSI	Short Subscriber Identity: Part of MS identity number in TETRA, see TSI.
SwMI	TETRA Switching and Management Infrastructure: Base station and network for TETRA.
TCH	Traffic channel
TDMA	Time Division Multiple Access: Several physical channels are located on one frequency channel on a time-sharing basis. Each physical channel is defined by a fixed time slot (four available in TETRA). The advantage of TDMA is that several channels are co-located on one carrier frequency, so less transmitters are required.
TETRA	Terrestrial Trunked Radio: An open standard for PMR and PAMR applications, defined by ETSI.
TMO	Trunked Mode Operation: Mobile stations communicate via a base station (in TETRA).
TSI	TETRA Subscriber Identity = MCC + MNC + SSI
V+D	Voice + Data: Part of the TETRA standard including a part of TMO and DMO, but not PDO.



**Willtek worldwide. Contact us.  
We are here to help.**

## **Willtek Worldwide Offices**

### **West Europe/Middle East/Africa**

Willtek Communications GmbH  
Gutenbergstrasse 2 – 4  
85737 Ismaning  
Germany

[info@willtek.com](mailto:info@willtek.com)

Willtek Communications SARL  
Aéroport – Bâtiment Aéronaf  
Rue de Copenhague – BP 9001  
95728 Roissy CDG Cédex  
France

[willtek.fr@willtek.com](mailto:willtek.fr@willtek.com)

Willtek Communications Ltd.  
Roebuck Place, Roebuck Road  
Chessington  
Surrey KT9 1EU  
United Kingdom

[willtek.uk@willtek.com](mailto:willtek.uk@willtek.com)

### **North America/Latin America**

Willtek Communications Inc.  
7369 Shadeland Station Way,  
Suite 200  
Indianapolis, IN 46256  
USA

[willtek.us@willtek.com](mailto:willtek.us@willtek.com)

### **Asia Pacific**

Willtek Communications  
22, Malacca Street  
#09-00, Royal Brothers Building  
Raffles Place  
Singapore 048980  
Singapore

[willtek.ap@willtek.com](mailto:willtek.ap@willtek.com)